

DRAWING NUMBER  
**53/4**

DRAWING NUMBER

DRAWING NUMBER

DRAWING NUMBER

# HOMES OF LEE'S CROSSING PLAT NO. 8

A P.U.D.

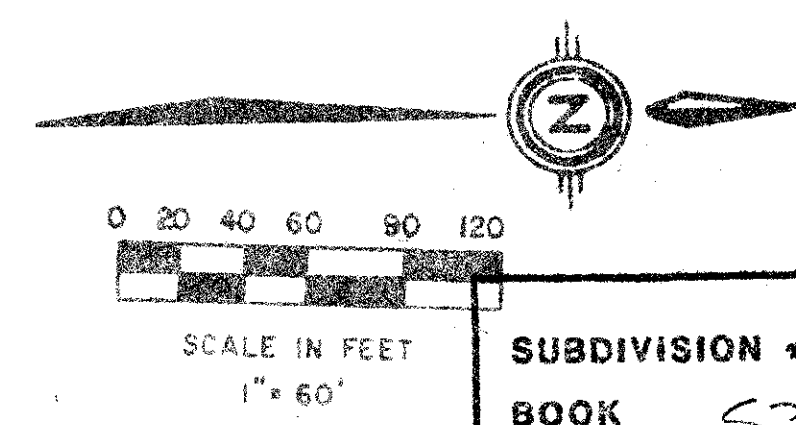
SITUATE IN SECTION 34, TOWNSHIP 44 SOUTH, RANGE 42 EAST,  
PALM BEACH COUNTY, FLORIDA.

SHEET 2 OF 2

STATE OF FLORIDA  
COUNTY OF PALM BEACH

THIS PLAT WAS FILED FOR  
RECORD AT \_\_\_\_\_ DAY OF \_\_\_\_\_  
AD. 1986 AND DULY RECORDED  
IN PLAT BOOK \_\_\_\_\_ ON PAGES  
\_\_\_\_\_ AND \_\_\_\_\_

JOHN B. DUNKLE, CLERK  
CIRCUIT COURT  
BY: \_\_\_\_\_, D.C.



34/44/42

SUBDIVISION \* *Homes of Lee's Crossing*

BOOK *53* PAGE *40*

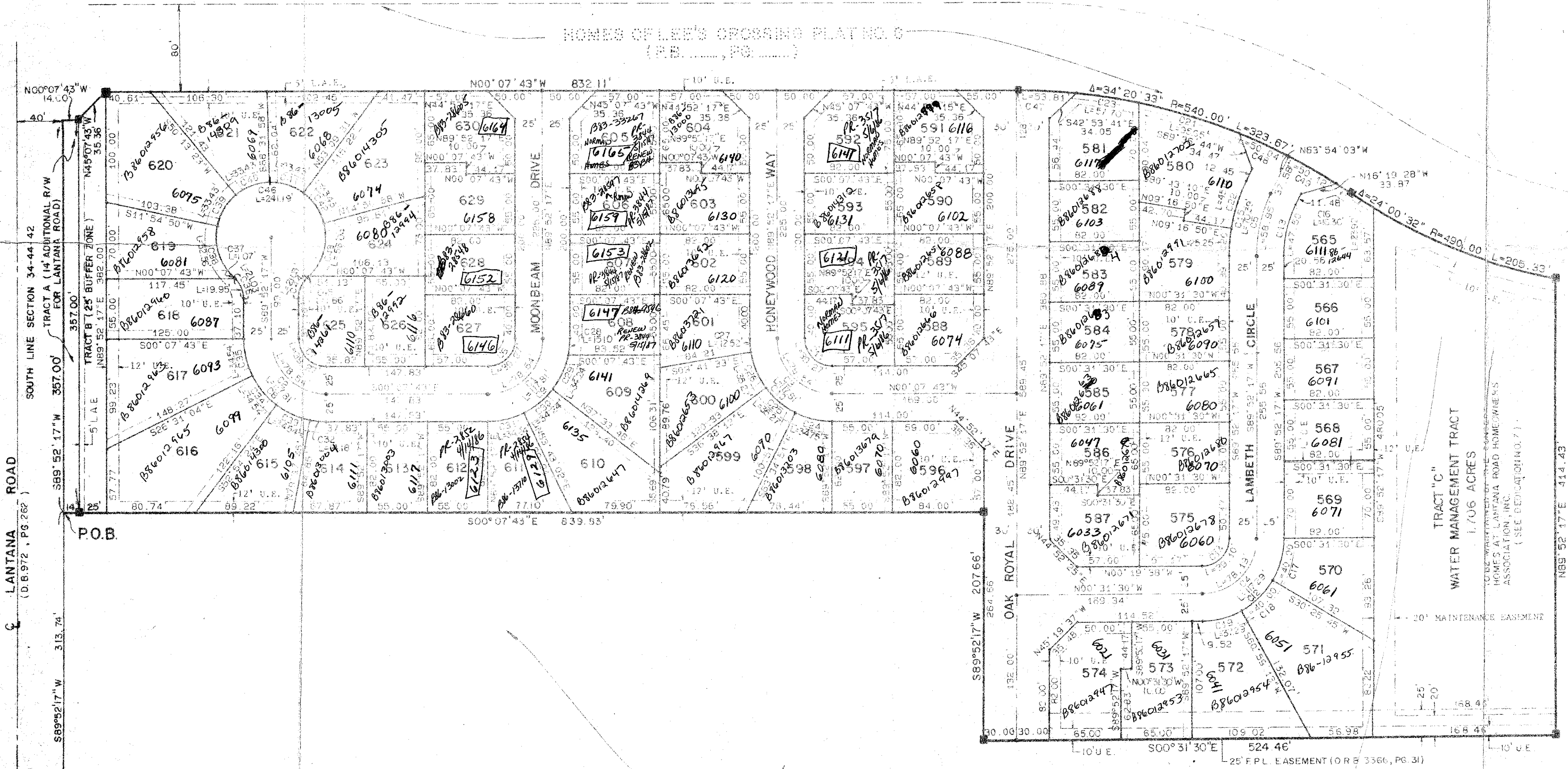
FLOOD ZONE *B* FLOOD MAP # *170A*

QUAD \* *B3* ZONING

SE ZIP CODE *3347*

PUD NAME *Plat 8*

NO.	DELTA	RADIUS	LENGTH
01	90°00'00"	50.00	78.54
02	90°00'00"	50.00	78.54
03	90°00'00"	50.00	78.54
04	88°36'13"	50.00	76.19
05	88°36'13"	50.00	76.19
06	90°00'00"	25.00	39.27
07	90°00'00"	25.00	39.27
08	90°00'00"	75.00	117.81
09	90°00'00"	75.00	117.81
10	90°00'00"	75.00	117.81
11	90°00'00"	25.00	39.27
12	89°36'13"	75.00	117.29
13	28°13'40"	103.78	47.50
14	88°36'13"	25.00	39.10
15	28°13'40"	253.78	70.39
16	11°44'07"	540.00	15.36
17	30°33'28"	75.00	40.00
18	30°33'28"	75.00	40.00
19	28°13'40"	75.00	37.29
20	0°34'35"	153.78	25.25
21	10°08'55"	540.00	95.65
22	18°48'07"	153.78	45.14
23	6°07'30"	540.00	57.70
24	28°13'40"	75.00	34.75
25	28°13'40"	75.00	35.27
26	11°44'07"	75.00	12.52
27	11°44'07"	75.00	15.10
28	28°13'40"	75.00	34.21
29	28°13'40"	75.00	34.24
30	10°45'58"	75.00	14.18
31	28°13'40"	75.00	34.54
32	28°13'40"	75.00	34.54
33	28°13'40"	75.00	34.54
34	48°11'23"	25.00	21.03
35	28°13'40"	25.00	11.07
36	28°13'40"	50.00	52.55
37	38°18'33"	50.00	31.43
38	38°18'33"	50.00	31.43
39	38°18'33"	50.00	31.43
40	38°18'33"	50.00	31.43
41	38°18'33"	50.00	31.43
42	38°18'33"	50.00	31.43
43	38°18'33"	50.00	31.43
44	48°11'23"	25.00	21.03
45	1°08'07"	50.00	1.86
46	276°22'46"	50.00	241.19
47	8°42'33"	50.00	53.81
48	8°42'33"	50.00	50.04
49	8°42'33"	50.00	50.12



NOTE: ALL LOTS HAVE A 7' ACCESS AND MAINTENANCE EASEMENT SHOWN THUS:

**HOMES OF LEE'S CROSSING # 8**

ADD BY *TP*  
CHECKED BY *BT*

0271-00153/4

Meridian Surveying and mapping inc. WEST PALM BEACH, FLORIDA

DRAWN	M.E.H.	DATE	FEB 1984
CHECKED		SCALE	1" = 60'
DRAWING NO.	84-P-006	HOMES OF LEE'S CROSSING PLAT NO. 8	

TURNOUT REQUIRED  
called  
Plat 79-  
804.00  
10.15.00